



Utah State
Board of
Education

Teaching
and
Learning

Quarterly Training Jan 24, 2025

Live & Recorded, Submit Google Form for relicensure credit

Cassia Peeler M.Ed, USBE, Educational Specialist

Dr. Cynthia White, USBE, Educational Specialist

Meagan Johnston, M. something- SOEP Program Manager

Meeting Norms



- Raising hands/using the chat
- Assuming goodwill, both in yourself and others
- Following through workflow to completion.

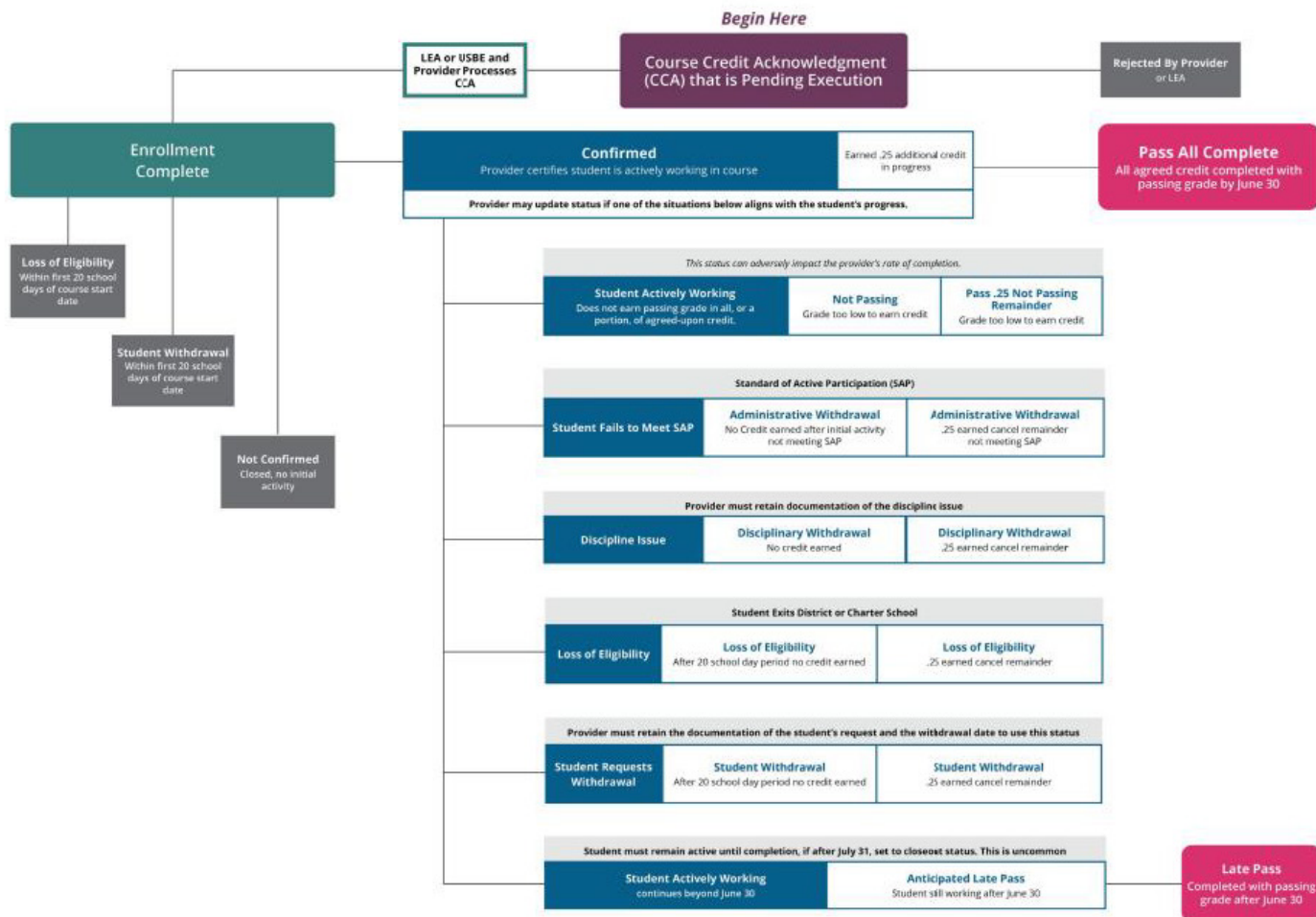
Mission

To elevate student success

Vision

To be Utah's premier destination for online learning.

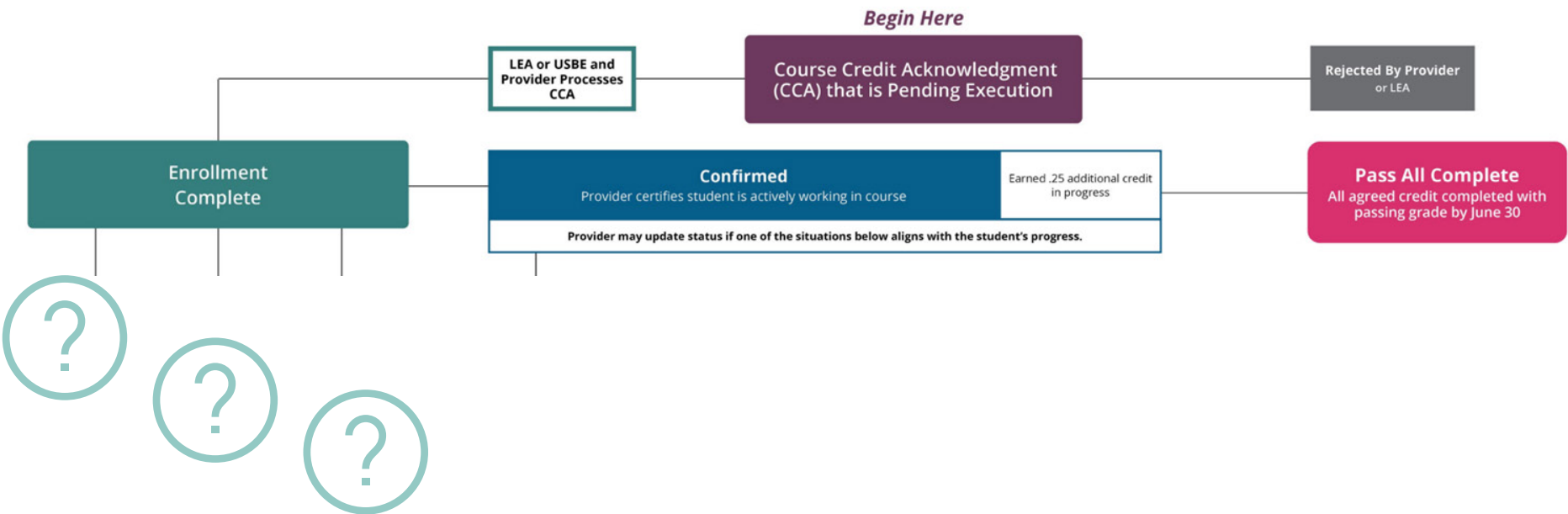
2024-2025 SEATS Status Flowchart



FY25 Course Fees are as follows:

S.B. 2 Public Education Base Budget Amendments \$4494 for Fiscal Year 2025		Increase in WPU: 5%	1.05	Rounddown Protocol	
Tier	Category		.25 Credit	.5 Credit	
Tier a	Financial Literacy		\$157	\$315	
	Health		\$157	\$315	
	Physical Education		\$157	\$315	
	Digital Studies		\$157	\$315	
Tier b	Driver Education		\$157		
Tier c	Fine Arts and CTE Core		\$196	\$392	
Tier d	Social Studies Core		\$236	\$472	
	World Language		\$236	\$472	
Tier e	Language Arts, Math and Science Core		\$275	\$550	
	Concurrent Enrollment		\$275	\$550	
Tier f	Other Elective Credits (Anything not meeting requirements of a-e)		\$196	\$392	

Course fees are increased by the WPU increase yearly.





moving out of the district, starting home school, UFA funding comes through.



The student initiates the withdrawal process, they do not need to specify a reason.



The provider moves the status and the CCA is considered VOID.



Confirmed

Provider certifies student is actively working in course

Earned .25 additional credit
in progress

Provider may update status if one of the situations below aligns with the student's progress.

This status can adversely impact the provider's rate of completion.

Student Actively Working

Does not earn passing grade in all, or a portion, of agreed-upon credit.

Not Passing

Grade too low to earn credit

Pass .25 Not Passing Remainder

Grade too low to earn credit

Standard of Active Participation (SAP)

Student Fails to Meet SAP

Administrative Withdrawal

No Credit earned after initial activity
not meeting SAP

Administrative Withdrawal

.25 earned cancel remainder
not meeting SAP

Provider must retain documentation of the discipline issue

Discipline Issue

Disciplinary Withdrawal

No credit earned

Disciplinary Withdrawal

.25 earned cancel remainder

Student Exits District or Charter School

Loss of Eligibility

Loss of Eligibility

After 20 school day period no credit earned

Loss of Eligibility

.25 earned cancel remainder

Provider must retain the documentation of the student's request and the withdrawal date to use this status

**Student Requests
Withdrawal**

Student Withdrawal

After 20 school day period no credit earned

Student Withdrawal

.25 earned cancel remainder

Student must remain active until completion, if after July 31, set to closeout status. This is uncommon

Student Actively Working
continues beyond June 30

Anticipated Late Pass

Student still working after June 30

Late Pass

Completed with passing
grade after June 30



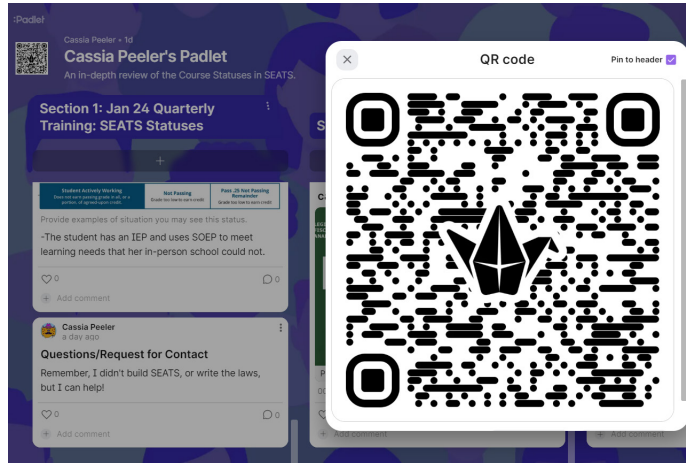
Utah State
Board of
Education

Teaching
and
Learning

Padlet instructions:

You will see 6 sections, one for each of the confirmed statuses in SEATS. Please work with the people around you, (or by yourself), to add situations that lend themselves to better understanding of the use of each status.

This is the second to last slide.



LINKS:
padlet

form for certificate

feedback form