

Utah State Board of Education (USBE)

21st Century Community Learning Center (CCLC) Grant Competition 2020-2021

Absolute Priority Documentation Example

Note: Examples NOT inclusive of all options for documentation

Absolute Priority Documentation - 40% or above poverty rate (free and reduced price lunch rate) at each of the proposed program sites

Additionally, a letter from school administration on letterhead stating the school’s free and reduced lunch rate will also serve as acceptable documentation

School Number	District Name	School Name	Total Students Enrolled in School	Free and Reduced Lunch Total	Free and Reduced Lunch Percentage
111	Harrison District	Kennedy School	200	100	50%
222	Harrison District	Johnson Junior	400	300	75%
444	Harrison District	Lincoln High	600	400	67%

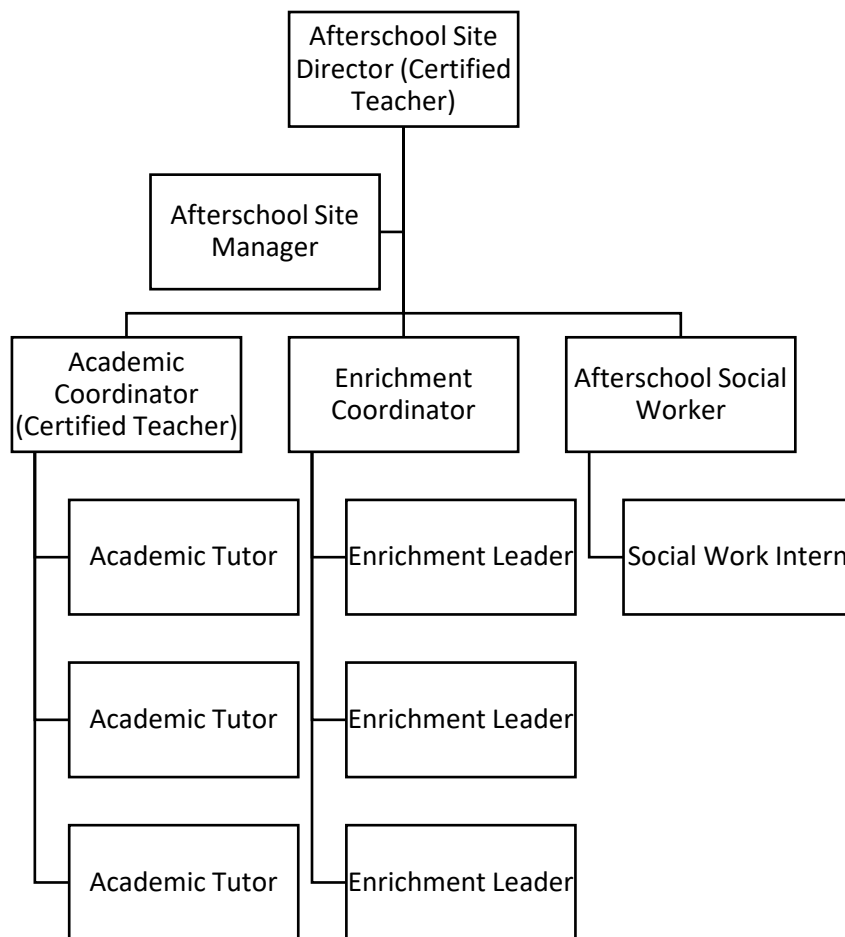
Utah State Board of Education (USBE)
21st Century Community Learning Center (CCLC) Grant Competition
Competitive Priority Documentation Information

Note: Examples NOT inclusive of all options for documentation

Competitive Priority Documentation for ALL proposed program sites

The program plan includes a supervisory role for at least one licensed teacher with appropriate endorsement in secondary, elementary or early childhood according to the grade levels of the students to be served

Kennedy School



Utah State Board of Education (USBE)
21st Century Community Learning Center (CCLC) Grant Competition
Competitive Priority Documentation Information

Note: Examples NOT inclusive of all options for documentation

Competitive Priority Documentation for ONE proposed program sites

The proposed program will serve 50% or more students from refugee backgrounds

Documentation Information - A letter from school or organization administration on letterhead stating the proposed program site serves 50% or more youth from refugee backgrounds

Utah State Board of Education (USBE)
21st Century Community Learning Center (CCLC) Grant Competition
Competitive Priority Documentation Information
Rural Map

