



CTE DIRECTIONS

Career and Technical Education (CTE) News and Information

September 2021

Career and Technical Education provides all students access to high-quality, rigorous career-focused programs that result in attainment of credentials with labor market value.

Welcome Back to a New School Year

Students, plan now to meet with your school counselor to create your plan for high school to college and career. Your school counselor can assist you as you plan your CTE classes throughout high school and your postsecondary options most relevant to your chosen career. Planning and preparing are key elements to your college and career success.



- Become a member of a [Career and Technical Student Organization](#) (CTSO).
- Juniors: Ask your school counselor if you are on track to become a CTE Pathway completer. (A CTE Pathway completer is eligible to receive a Secondary Pathway Completer Recognition Award at graduation.)
- Seniors: Apply for a [CTE Scholarship and Tuition Award](#). The application goes live on November 1, 2021.
- Join the [UtahCTE.org](#) online communities—[Twitter](#), [Facebook](#), and [Instagram](#)—to connect with CTE.

Utah CTE Career Pathways

With a new school year comes the arrival of the [2021-2022 CTE Career Pathways](#). Students who focus on a Career Pathway acquire the skills necessary for entry into well-paid careers with high potential for rapid financial growth, increased levels of responsibility, and a high degree of personal satisfaction. Each Career Pathway aligns with and are categorized by the national Career Clusters, culminating in an industry recognized credential of value.

[Charts](#) – 35 Career Pathways charts outline the sequence of courses in a specific program of study, beginning in junior high/middle school, continuing through high school, and connecting to postsecondary education and training.

[List](#) – A complete list of the Career Pathways organized Career Cluster.

[Contact List](#) – Career Pathways organized by the Utah CTE education specialist who oversees each Pathway.

Pathways list and the individual charts to plan your career path. Educators, view these documents to assist students in their college and career planning.



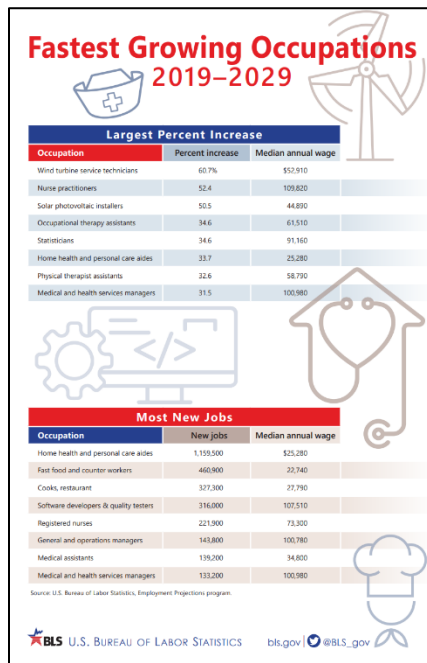
New CTE Career Pathway

A new CTE Career Pathway has been added for the 2021-2022 school year. The Pathway is [Family and Human Services](#). This Pathway prepares students for careers in the Behavioral Health industry. Explorer courses in this Pathway include [Introduction to Behavioral Health](#), [Introduction to Health Science](#), and [Human Development](#). In the new Introduction to Behavioral Health course students will learn about the Behavioral Health industry. Topics covered in this foundation level course include understanding self-concept, effective communication, healthy relationships, addictive behaviors, mental health disorders, and protective laws and rights of patients and practitioners.

“I have taken high school, college concurrent enrollment, and technical college health courses. In 12th grade I went to Mountainland Technical College and [earned my] CNA. This course taught me a lot about how to help and treat patients with professionalism and the empathy they need to get the care they need in all areas; not only physical, but also mental and emotional,” said Emma Peterson, student in Alpine School District.



Publications and Resources



UtahCTE.org

On UtahCTE.org, there are publications and resources available to assist teachers in promoting their CTE programs. Take a look at <https://bit.ly/3mf7eC8> and <https://bit.ly/3g95lxc>.

CTE Logo and Other CTE Graphic Marks

Are you looking for the CTE logo or other CTE graphic marks to use in print publications and on your website? Contact the CTE director in your region. He or she will provide you with the logo or graphic marks you need.

Department of Workforce Services (DWS)

DWS has many interactive resources to assist you. Resources include demographic data, local insights (county and regional snapshots), industry briefs, training and reference materials, and the Utah Occupational Explorer. Check it out at <https://bit.ly/3CZCJ95>

U.S. Bureau of Labor Statistics

The U.S. Bureau of Labor Statistics has data to use in your classroom. Check out the BLS Classroom page at <https://www.bls.gov/k12/> for publications and resources, including classroom activities, posters, and videos.

New Utah DECA Advisor

Jill Hess, CTE coordinator at Davis High School, is the new Utah DECA advisor. Jill has been involved in Business and Marketing Education and DECA in the state of Utah for over 20 years. She has taught at Viewmont High, Enterprise High, and Syracuse High. She has a passion for CTSOs. She looks forward to working with all the DECA students and advisors in the state and to continue the great things that happen in DECA.



Calendar:

September 2: [Utah State Charter School Board](#) Meeting – 250 East 500 South – Salt Lake City, UT

September 9: [Utah State Board of Education](#) Meeting – 250 East 500 South – Salt Lake City, UT

[Utah CTE Calendar](#) | [ACTE Calendar](#)

Utah CTE classes are open to all qualified students without regard to race, color, national origin, sex, disability, or age.

