

Adding a graph to the Accountability and Data Project Reporting Template

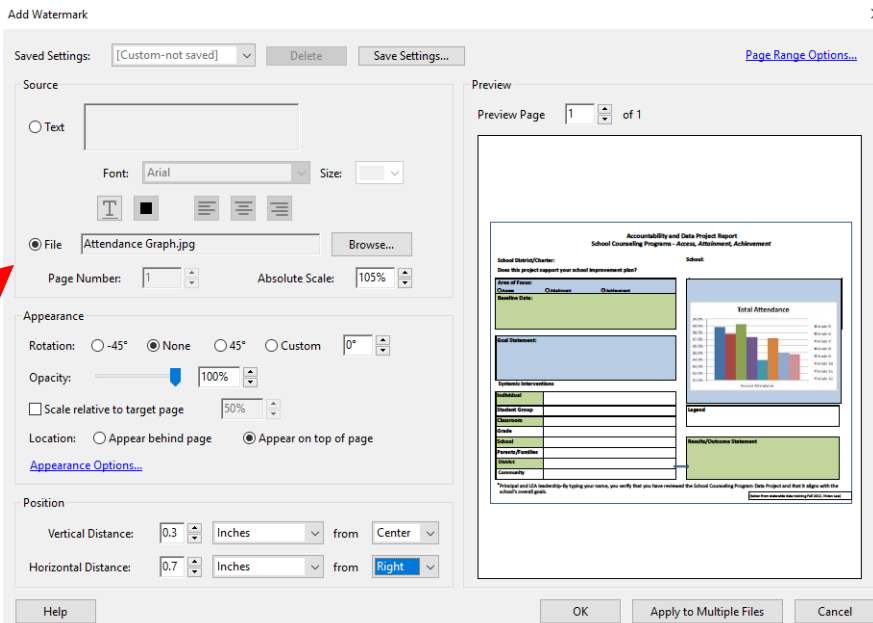
To add your graph to the Accountability and Data Project Reporting Template, you will add it as a watermark. **Make sure you have opened the document in Adobe Acrobat and not in Reader.** Start by going to Tools in the menu options. The chain of commands are as follows:

Tools > Pages > Watermark > Add Watermark (Adobe Acrobat XI Pro) OR

Edit PDF>Watermark drop down tab>Add (Adobe Acrobat DC) OR

Use the snipping tool in your desktop applications to copy and paste your graph instead of using the watermark feature in Adobe Pro/DC.

If using Adobe Pro/DC to insert graph, in the watermark window, mark file instead of text. Use “browse” to pick your graph file from your finished project.



Then adjust it to size and position needed in the Dialog Box that pops up so that it fits within the graph field/blue box.

