

Community Asset Spreadsheet

Type your information in this spreadsheet and the data will automatically fill out the asset map on page 5. You can type the information in this PDF, on the attached spreadsheet files, or by printing out this page. To customize, add your Health Center Logo above. We have provided the Central Texas Food Bank entry as an example for how to fill out the information.

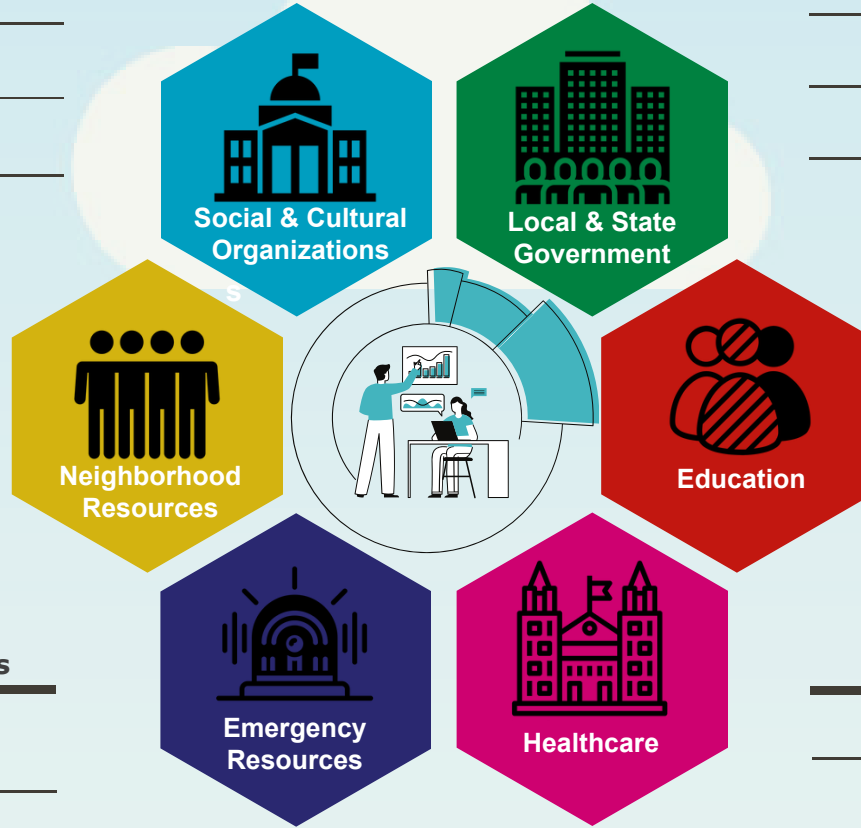
Partner Name	Contact info	Point of Contact / Website	Resource/Strengths	Collaboration Goals	Organizational Benefit
<i>Organization Name</i>	<i>Phone number / address</i>	<i>Best member to contact?</i>	<i>What do they offer?</i>	<i>What goals can you accomplish together?</i>	<i>How can each group benefit?</i>
Central Texas Food Bank	512.355.5554 / 6500 Metropolis, Austin, Tx	Relations Manager	Food pantry & groceries	Seeking new avenues in the city	Potential referral for clients in need
Health Care - i.e. - Hospitals, Urgent Care					
Education - i.e - Migrant Education, Head Start					
Social and Cultural Organizations - i.e. - Faith-based organizations					
Local and State Government - i.e. - City programs					
Neighborhood Resources - i.e. - Community centers					
Emergency Resources - i.e. - Food bank, police					

Social & Cultural Organizations

Community Asset Map Template

Local & State Government

Neighborhood Resources

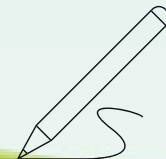


Education

Emergency Resources

Healthcare

Asset Mapping



This asset map is a reference to connect local resources. To find more services and organizations, consider utilizing networks such as FindHelp.org, 211.org, NCFH.org, or any organization with a directory of national and local resources.