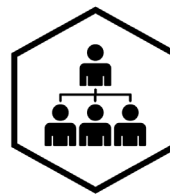


# Utah Career and Technical Education Career Pathway Chart 2025-2026 School Year



Business  
CAREER PATHWAY  
Business Management & Entrepreneurship  
CAREER CLUSTER

## Career Cluster: Business Management & Entrepreneurship


### Career Pathway: Business

JUNIOR HIGH / MIDDLE SCHOOL			
College and Career Awareness			
Digital Literacy		Word Processing	
HIGH SCHOOL			
SUPPORTING COURSES: Suggested high school courses that support the Career Pathway (Courses DO NOT count towards the Pathway)			
Influence and Content Marketing		Sports and Outdoor Design 1 *	
EXPLORER COURSES: Choose one or more of the following courses.			
Accounting 1 * +	Business Office Specialist *	Entrepreneurship * +	Small Business Math *
Business Communication 1 * +	Customer Service *	Exploring Business, Finance, and Marketing	Sports and Outdoor Recreation Marketing
Business Communication 2	Digital Business Applications *	Marketing 1 * +	Web Development 1 *
Business Law +	Digital Media 1 *	Real Estate	
Business Leadership 1 * +	Economics * (IB)	Retailing *	
CONCENTRATOR COURSES: To be a concentrator you must pass one of the following courses AND one explorer course.			
Business Management * (IB)		Business Leadership 2	
COMPLETER COURSES: To be a completer you must pass a concentrator course and enough courses to equal 3.0 credits in this Pathway.			
Business, Finance, and Marketing Capstone			
CTE Internship		Apprenticeship	
POSTSECONDARY: There are many options for education and training beyond high school.			
Utah System of Higher Education: <a href="https://ushe.edu">ushe.edu</a> (Utah's public colleges and universities)		UtahMajors.org: <a href="#">Majors Guide</a>	

\* concurrent enrollment course + recommended explorer course

### HIGH SCHOOL TO POSTSECONDARY EDUCATION AND TRAINING

There are several options for education and training beyond high school, depending on your career goals.

	Certificate	2-Year Associate Degree	4-Year Bachelor's Degree
	<ul style="list-style-type: none"> <li>&gt; Business Analyst</li> <li>&gt; Entrepreneur</li> <li>&gt; Supply Chain Professional</li> </ul>	<ul style="list-style-type: none"> <li>&gt; Account Representative</li> <li>&gt; Consumer Advocate</li> <li>&gt; Dispute Resolution Analyst</li> </ul>	<ul style="list-style-type: none"> <li>&gt; Budget Analyst</li> <li>&gt; CTE Teacher</li> <li>&gt; Credit Counselor</li> <li>&gt; Financial Manager</li> </ul>

Career and Technical Education provides all students access to high-quality, rigorous career-focused programs that result in attainment of credentials with labor market value. [Credentials of Value](#)

Utah CTE classes are open to all qualified students without regard to race, color, national origin, sex, disability, or age.

### Advice to Students

**"Taking CTE classes has helped me a lot.** The classes are engaging while also being informative. I would suggest taking them because not only do you get a certificate you also learn a lot of valuable skills. There is no downside to CTE classes."

Logan Burrell  
Future Business Owner

### LEARN MORE ABOUT OCCUPATIONS AND WAGES

#### Business Management & Entrepreneurship

Department of Workforce Services  
[Utah Occupational Explorer](#)

### DECA | FBLA

are the Career and Technical Student Organizations (CTSO) for students in the Business Career Pathway.

[DECAdirect.org](https://deca.org) | [UtahDECA.org](https://utahdeca.org) | [Utah DECA flyer](#)  
[FBLA-PBL.org](https://fbla.org) | [Utah-FBLA-PBL.org](https://utahfbla.org) | [Utah FBLA flyer](#)

