

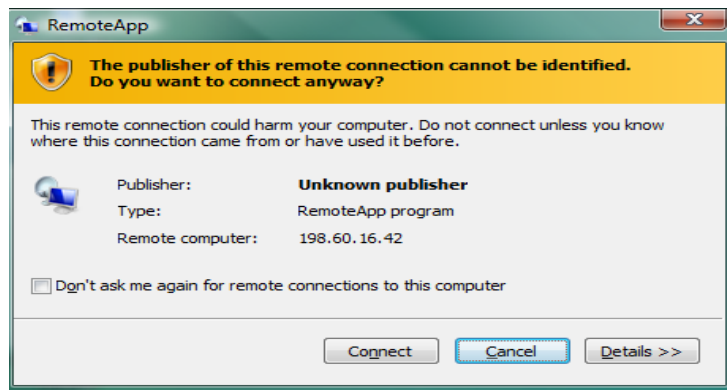
Remote Desktop Installation for SIS2000+

LEAs that are hosted by USOE have to set up a Remote Desktop Connection on each computer before the user of that computer can use the SIS2000+ FoxPro Client programs.

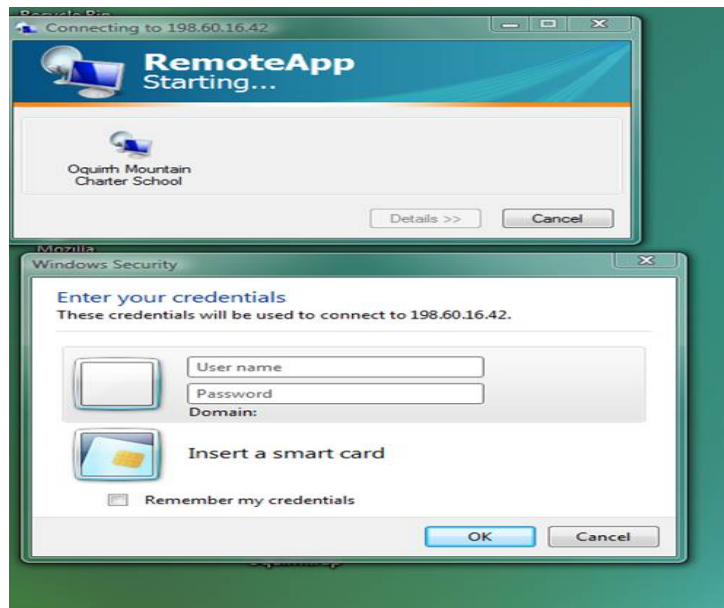
Prerequisites for using Remote Desktop:

- **Windows Vista® with SP1** includes the required components. By default, Windows Vista with SP1 supports the Terminal Services Easy Print driver with no additional configuration.
- **Windows XP with Service Pack 3** which includes Remote Desktop Client 6.1. You must have the latest Remote Desktop Client (version 6.1). You must also install a supported version of .NET Framework. You can download Microsoft **.NET Framework 3.5** (which includes .NET Framework 3.0 SP1) and the Remote Desktop Client 6.1 from the Microsoft Download Center (<http://go.microsoft.com/fwlink/?LinkId=109422>).

For your Remote Desktop connection you will receive a file (schoolname.rdp) from your USOE SIS specialist configured with your LEA connection information. Copy this file to your Desktop. Double click to launch it. If you get a security warning screen, click on “Don’t ask me again for remote connections to this computer”. Click on Connect.

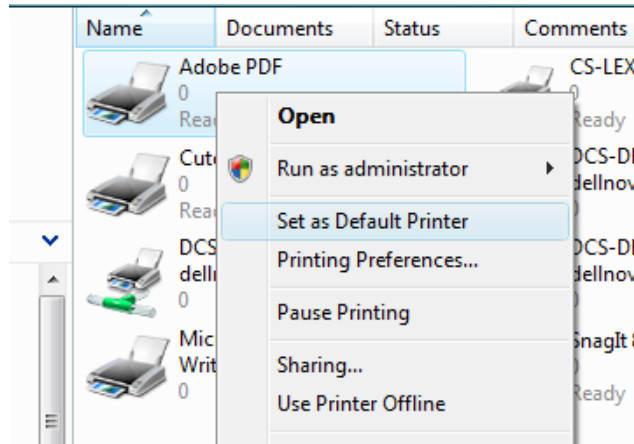


You will get the following screens. Type in the Terminal Server username and password that you were given. **Click on “Remember my credentials”**. Click OK. You will then be logged into your SIS2000+ session.



Remote Users - Printing Information

When printing reports from SIS2000+ the report will automatically go to your default printer, unlike the previous Remote Desktop version where you had to install Uniprint software in order to print reports. In order to save reports to .pdf (such as the Year End reports), you will have to install PDF Writer software. This will install the PDF Writer as a printer. You then need to change your default printer to that PDF Writer **before you process the report** you want to save as a .pdf.



The one we recommend is Adobe Acrobat. You may find others but you need to make sure they have the capability to capture large amounts of data. Some of the free ones we found do not work when trying to save large reports like the UT Term End Attendance.

Your Technical Support person at your school should be able to help with this.

There is no Macintosh client for this version of Remote Desktop. You will need a Windows OS on your Mac computer with the .NET Framework 3.5 installed. Your Technical Support person at your school should be able to help with this also.