

Utah Statewide Scores on the Criterion-Referenced Tests (CRT) 2010-2011

Larry Shumway, Ed.D.
State Superintendent of Public Instruction

Judy W. Park, Ed.D.
Associate Superintendent
Student Services and Federal Programs

John Jesse
Director of Assessment



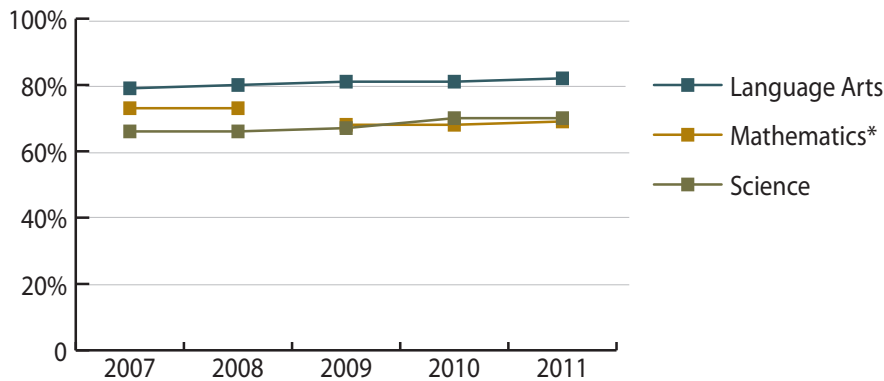
250 East 500 South
P.O. Box 144200
Salt Lake City, Utah
84114-4200

Utah Criterion-Referenced Tests, 2010-2011

The purpose of Utah's Criterion-Referenced Tests (CRT) is to measure and assess the knowledge, skills, and abilities of students in the areas of English Language Arts, Mathematics, and Science, as outlined in the Utah Core Curriculum. These scores are reported first as proficient/not proficient, and then by four proficiency levels to further differentiate students' degree of mastery of the specified concepts.

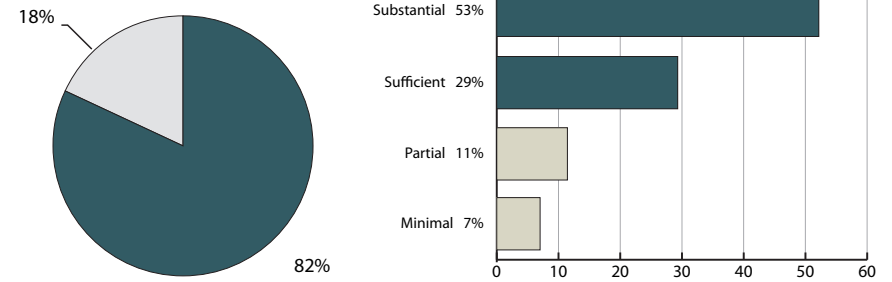
- English Language Arts CRTs are grade-specific tests. Students take the test that corresponds to the grade in which they are enrolled.
- Math CRTs for elementary students are also grade specific. Students take the test that corresponds to the grade in which they are enrolled. For secondary students, the CRTs are course specific.
- Science CRTs for fourth to eighth grade students are grade specific. Students take the test that corresponds to the grade in which they are enrolled. For secondary students, the CRTs are course specific.

Five-Year Historical Result Trend Lines

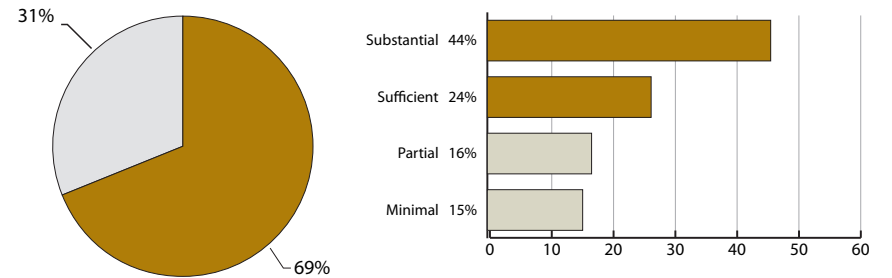


* Mathematics scores from 2009 received a new cut score that changed the scaling and equating. Data from 2009 on are not comparable to prior years.

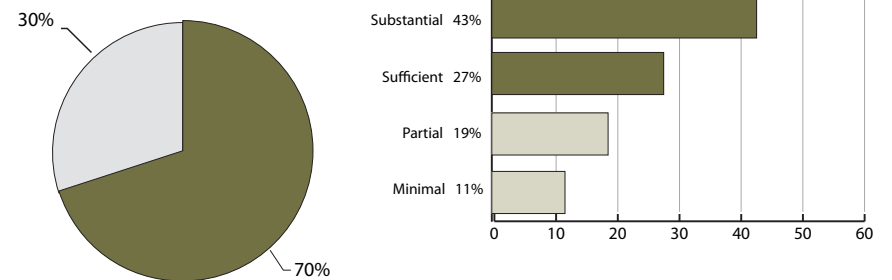
Language Arts - Percent Proficient



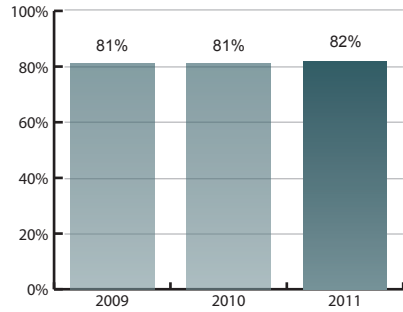
Mathematics - Percent Proficient



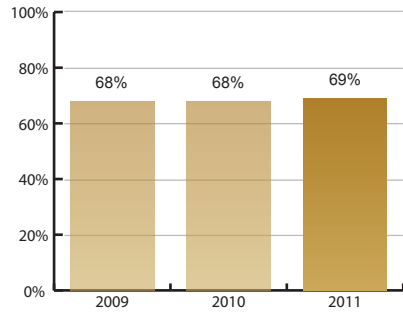
Science - Percent Proficient



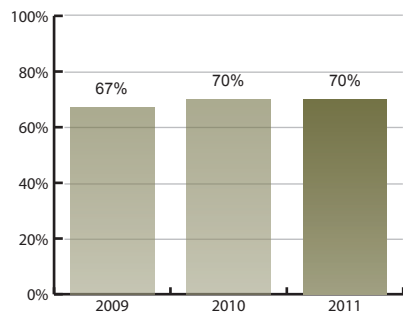
Language Arts



Mathematics

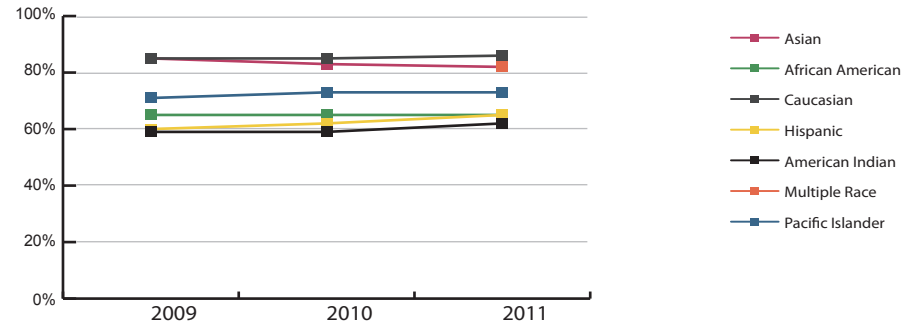


Science

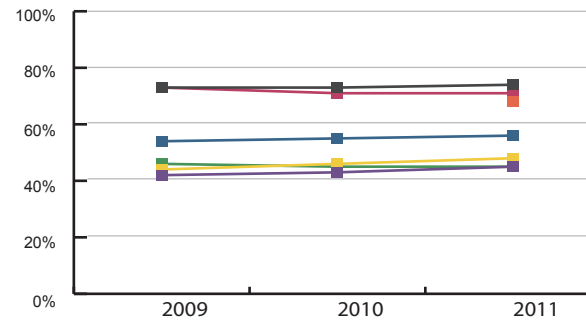


Performance by Ethnicity

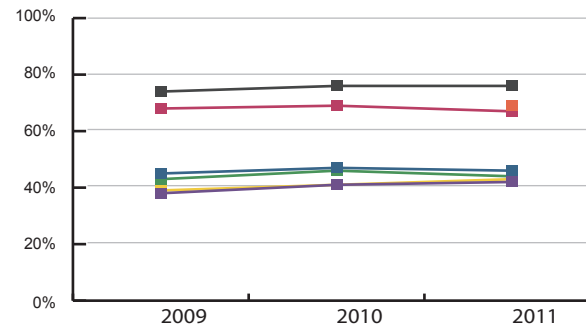
Language Arts



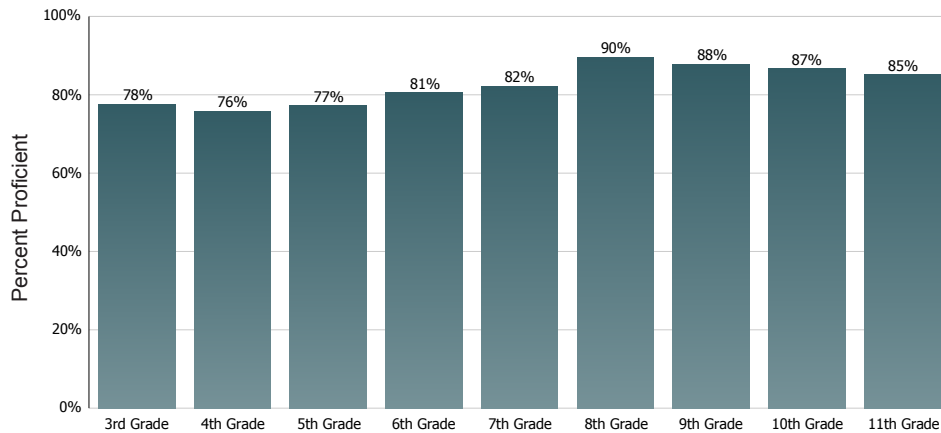
Mathematics



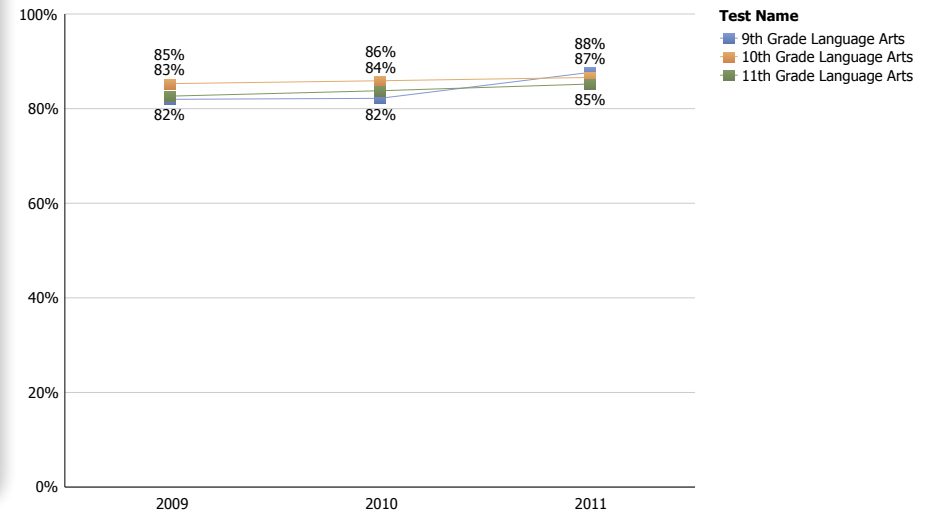
Science



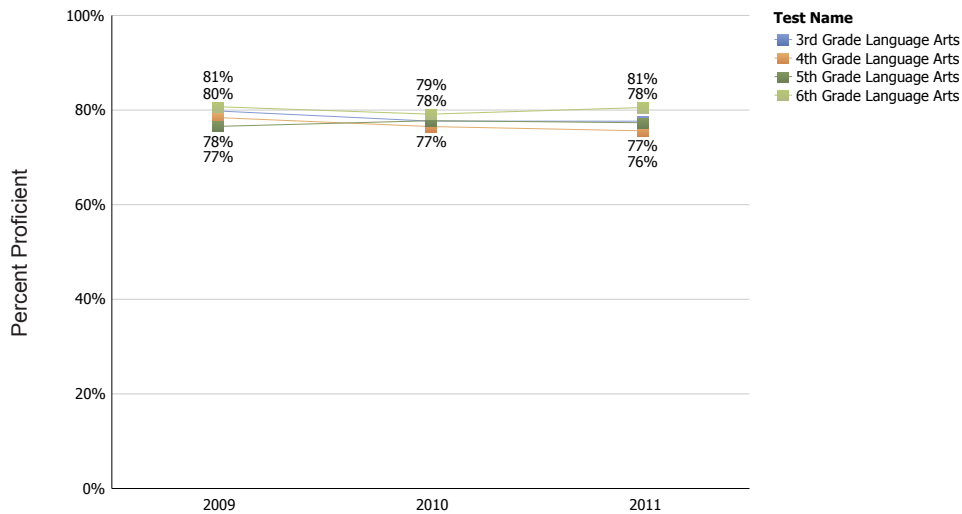
2010-2011 English Language Arts CRT by Subject



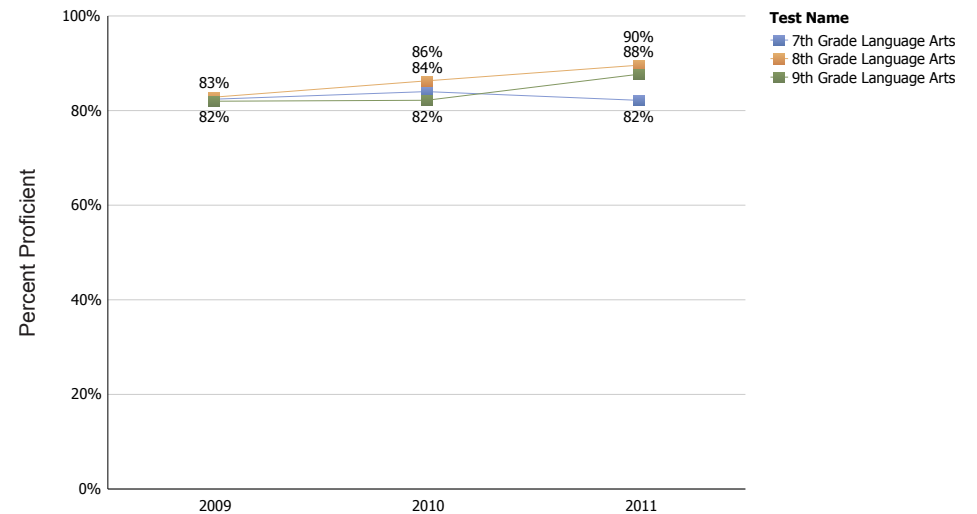
Secondary - High Schools



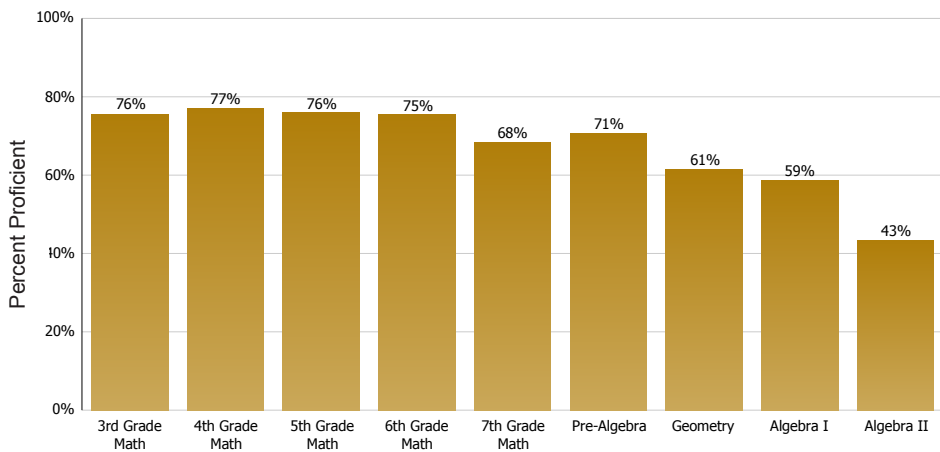
Elementary



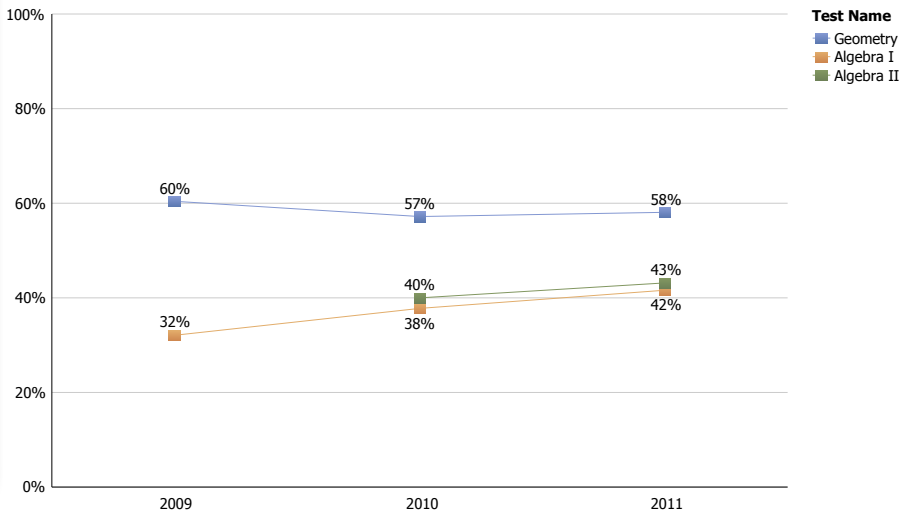
Secondary - Middle/Jr. High



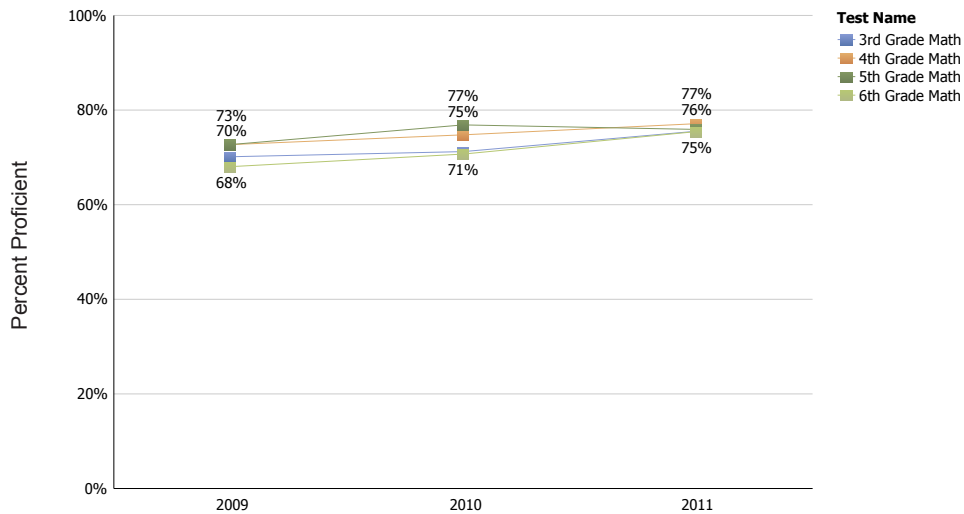
2010-2011 Mathematics CRT by Subject



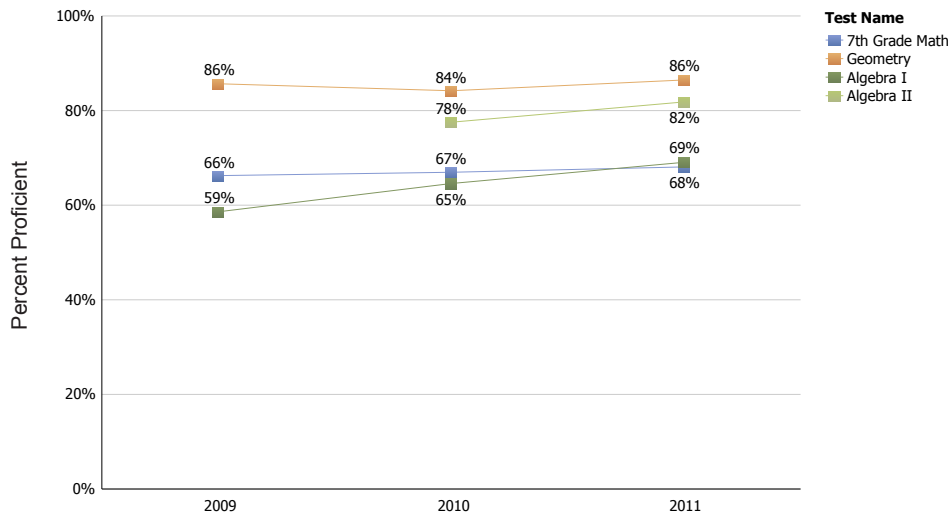
Secondary - High Schools



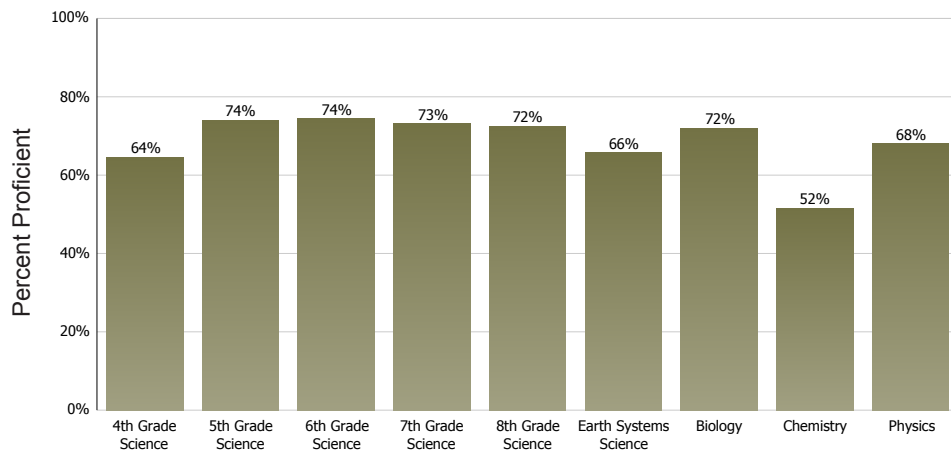
Elementary



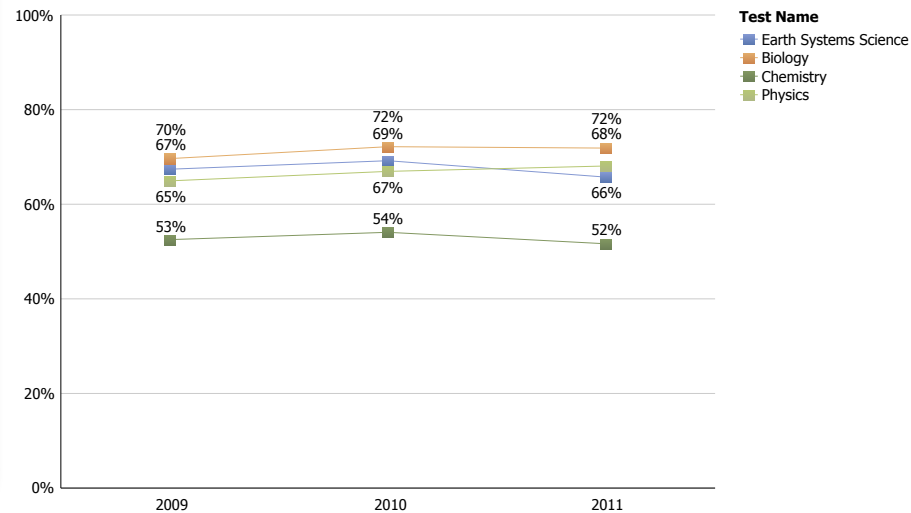
Secondary - Middle/Jr. High



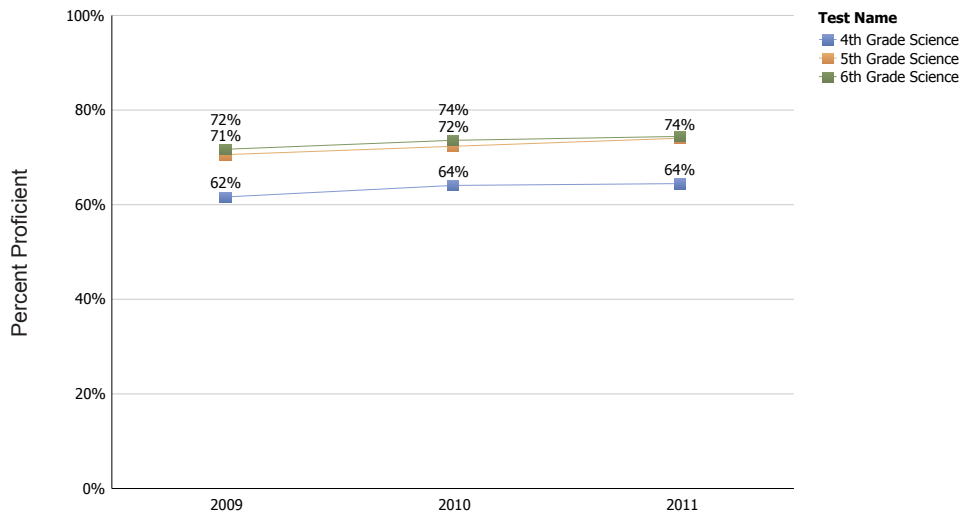
2010-2011 Science CRT by Subject



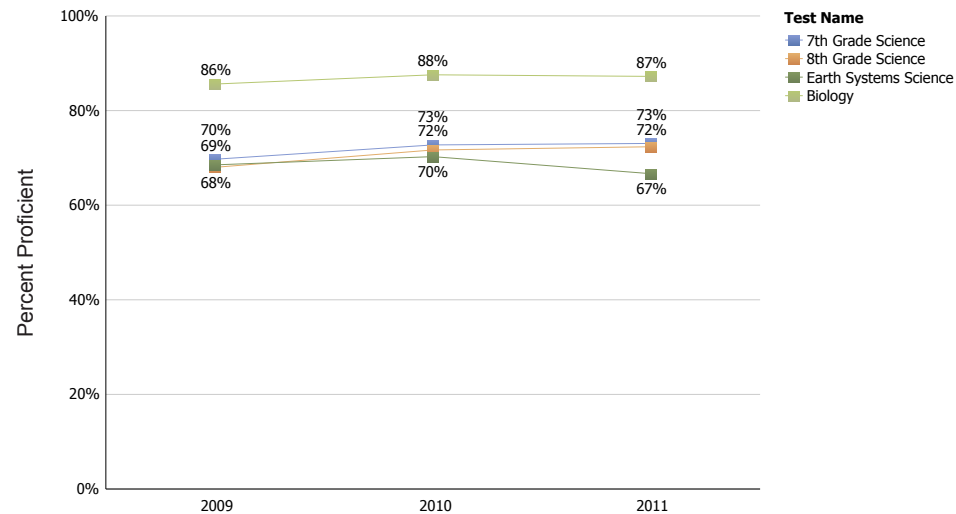
Secondary - High Schools



Elementary



Secondary - Middle/Jr. High



2011 CRT by Percentage and Number Proficient — All Grades

Results by Percentage Proficient

Demographic Categories	Language Arts	Mathematics	Science
	% Prof	% Prof	% Prof
<i>All Students</i>	82.2%	68.5%	69.8%
African American	64.6%	45.1%	44.0%
American Indian	62.2%	44.7%	41.6%
Asian	81.8%	71.4%	67.0%
Caucasian	86.4%	73.6%	76.3%
Hispanic	64.6%	47.7%	43.0%
Multiple Races	82.4%	67.7%	69.5%
Pacific Islander	73.0%	56.1%	46.4%
Female	85.3%	68.5%	68.0%
Male	79.2%	68.6%	71.5%
Econ Disadv	71.6%	57.9%	55.7%
Not Econ Dis	88.7%	75.3%	78.2%
SWD	50.5%	42.6%	40.7%
Not SWD	86.7%	72.2%	73.8%
Mobile	67.0%	50.5%	48.9%
Not Mobile	83.1%	69.7%	71.1%
ELL	35.4%	29.7%	18.2%
Not ELL	85.0%	71.0%	72.8%

Results by Number Proficient and Total

Language Arts		Mathematics		Science	
# Prof	Total	# Prof	Total	# Prof	Total
311,777	379,435	244,071	356,184	226,606	324,737
3,430	5,309	2,309	5,125	2,001	4,550
3,070	4,934	2,101	4,697	1,722	4,141
5,723	6,998	4,715	6,602	4,245	6,334
255,597	295,984	203,525	276,376	193,429	253,493
36,526	56,525	25,771	54,073	20,634	47,979
3,176	3,856	2,483	3,669	2,257	3,248
4,255	5,829	3,167	5,642	2,318	4,992
158,087	185,263	119,242	174,203	107,275	157,733
153,690	194,172	124,829	181,981	119,331	167,004
103,252	144,237	79,928	138,130	67,993	121,977
208,525	235,198	164,143	218,054	158,613	202,760
24,246	47,972	18,830	44,233	15,931	39,161
287,531	331,463	225,241	311,951	210,675	285,576
15,376	22,954	10,940	21,680	9,332	19,072
296,401	356,481	233,131	334,504	217,274	305,665
7,631	21,578	6,293	21,188	3,254	17,871
304,146	357,857	237,778	334,996	223,352	306,866