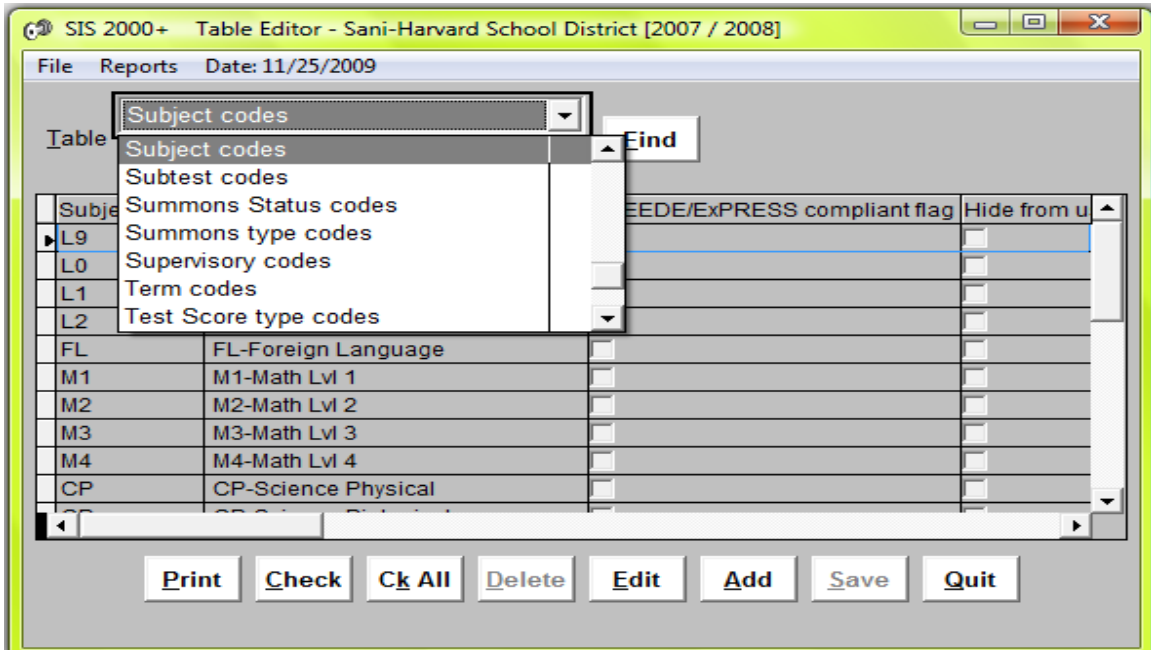


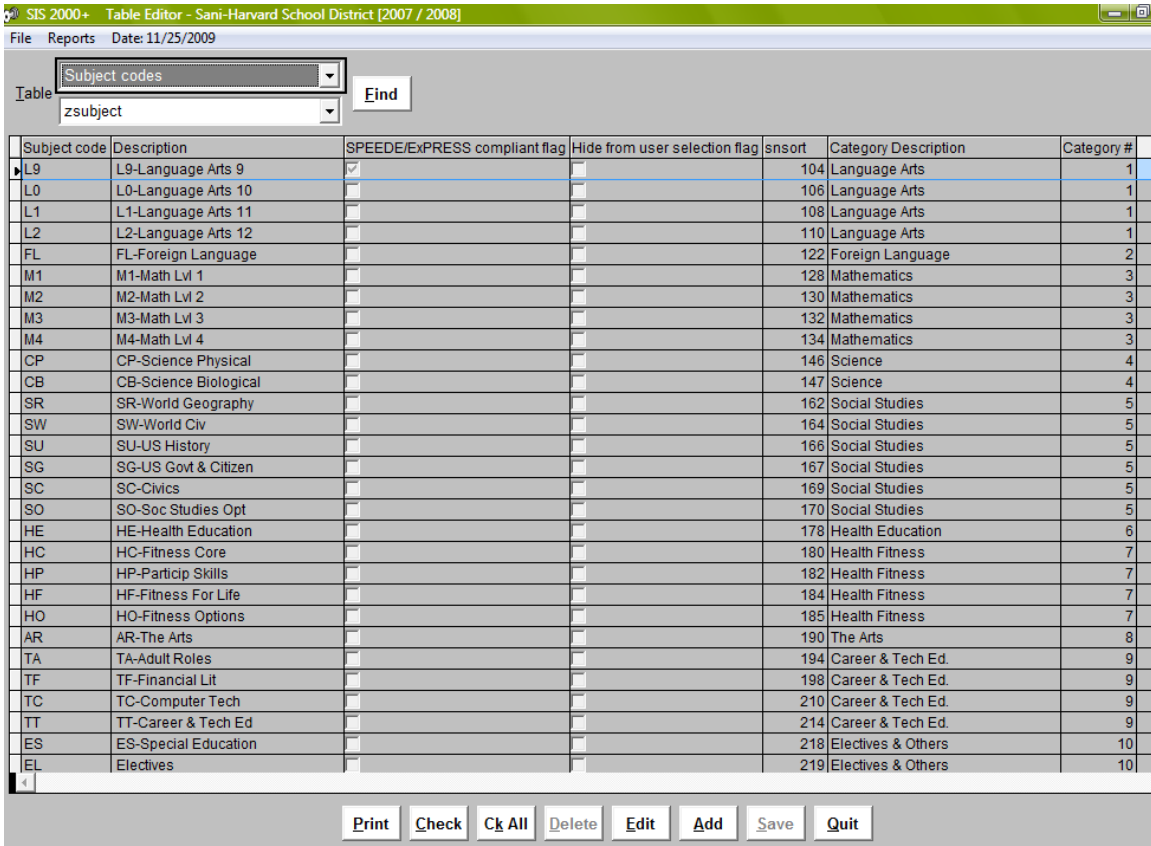
Graduation Requirements

Prerequisites:

Setting up Subject Codes: Go to System/Table Editor. Choose Subject Codes in top dropdown field.



Add, Edit, Delete your Subject Codes. Use the Category Description and Category # fields to group the like subjects together so they show together in the Credit Evaluation and transcript.



Make sure you have the Subject Code correct in System/District Courses.

SIS 2000+ Course Editor - Sani-Harvard School District [2007 / 2008]

Date: 11/25/09

Course Code: 3620 Description: Chemistry

General Credits / Codes Pre-Co / Misc.

Subject: CP-Science Physical (circled in red)

Department: Science

Status: Active

Low Grade: Kindergarten

High Grade: Twelfth

Gender: Co-Ed

Can be Scheduled

Take Attendance

Count Attendance

Assign Grades

Post to History

Schedule Conflict OK

of Terms: 4 # of Periods: 1

Sect Size: 35 TA Sect Size: 0

Notes:

Find List Delete Edit Add Save Quit

If any changes were made to your subject codes table or the subject codes on your district courses, you will need to work with your SIS2000+ specialist to reflect these changes in your Academic Progress/Course History on historical courses and current year manually entered courses.

Course History Shasta Liberty Wednesday, 25 November 2009 29:13 | User Profile | Change User | Logout

Track: Sani-Hollywood High Include Exited: Include Future: Student:

Babington, Babs S (17022) Grade: 10

Gr	Course	Subject	Academic Terms						Citizenship Terms						Cr/Mrk	Earned	School	Del
			1	2	3	4	5	6	1	2	3	4	5	6				
2007 / 2008																		
10	Anc/Middle Ages Wld Civil	SW-World Civ	D-	F					S	S					0.2500	0.2500	30712	
10	Biology	CB-Science Biological	D-	D-	D-	D-			S	N	N	N		0.2500	1.0000	30712		
10	Drafting II	TT-Career & Tech Ed	B-	C+	A-				S	S		S		0.2500	0.7500	30712		
10	Elem Algebra	M1-Math Lvl 1	C	D+	NG	NG			S	S	U	S		0.2500	0.5000	30712		
10	Health Education II	HE-Health Education	B+	C+					H	S				0.2500	0.5000	30712		
10	Language Arts 10	L0-Language Arts 10	B	B+	D-	D+			H	H	H	N		0.2500	1.0000	30712		
10	Marketing	TT-Career & Tech Ed	F	F					S	S				0.2500	0.0000	30712		
10	Participation Skills	HP-Particip Skills			B+	B+					S	S		0.2500	0.5000	30712		
9	STUDY SKILLS	Electives							H					0.0000	0.0000	30712	✗	
10	Weight Training	HO-Fitness Options			A	B					S	S		0.2500	0.3750	30712		
10	Woodworking	TT-Career & Tech Ed	A	B-					H	S				0.2500	0.5000	30712		
2006 / 2007																		
9	Basic Auto	TT-Career & Tech Ed	D+	C-					S	S				0.2500	0.5000	30712	✗	
9	Basic Cad Drafting	TT-Career & Tech Ed			A-	B					S	S		0.2500	0.5000	30712	✗	
9	Beg. Pottery	AR-The Arts			F	D-					S	S		0.2500	0.2500	30712	✗	

Requirements Editor

Go to Academic Progress/Utilities/Graduation Requirements (on the web). Click on the New link next to your school name.

Graduation Requirements Editor | Shasta Liberty | 29:55 | User Profile

Applications | Reports | Help

Schools Exiting Grade 12

- >> **Sani-Abe Lincoln High School** [New >](#)
[2008](#) [2009](#) [2010](#) [2011](#) [2012](#)
Archived: [2005](#) [2006](#) [2007](#)
- >> **Sani-Hollywood High** [New >](#)
[2008](#) [2009](#) [2010](#) [2011](#)
Archived: [2005](#) [2006](#) [2007](#)
- >> **Sani-Phoenix Home Study** [New >](#)
- >> **Sani-Princeton** [New >](#)
- >> **Sani-Stanford High School** [New >](#)
- >> **Sani-Thomas Jefferson High** [New >](#)
- >> **Sani-Tooele Homeschool Testing** [New >](#)
- >> **Sani-Tooele Private School Testi** [New >](#)
- >> **Sani-Yale High School** [New >](#)

Type in the School Year and Total Credit Required for graduation for that school year, including the Utah State requirements plus what the school requirements are. Choose correct Grades for that graduation year and click on Create.

view favorites, feeds, and history (Alt+F) | Shasta Liberty | Tue | 29:33 | User Profile

Applications | Reports | Help

School	School Year	Total Credit Required	Grades
>> Sani-Abe Lincoln High School	2012	27	9 - 12

[Cancel](#) | [Create >](#)

Click on Add New Eligibility Rules

SIS2000+ | Shasta Liberty | Tue | 29:57 | User Profile

Applications | Reports | Help

Sort	Eligibility Area	Grades	Credit Required	Delete
>>	Sani-Abe Lincoln High School 2012	9 - 12	26.0000	<input type="checkbox"/>

[Back to List](#) | [Copy Requirements *](#)

[Add New Eligibility Rules](#)

[Reset](#) | [Save >](#)

Type in the Rule Description and the Credit Required for the requirement. These Eligibility Rules are based on the Utah High School Graduation requirements (<http://www.schools.utah.gov/curr/main/gradbyyr.htm>)

SIS2000+ | Shasta Liberty | Tue | 29:39 | User Profile

Applications | Reports | Help

Sort	Eligibility Area	Grades	Credit Required	Delete
>>	Sani-Abe Lincoln High School 2012	9 - 12	26.0000	<input type="checkbox"/>
1	Language Arts	Edit Subjects	4.0	NEW

Click on Edit Subjects and highlight all the subject codes that will fulfill that Eligibility Area requirement. Keep adding all Eligibility Rules for that school year. Your Eligibility Rules credit will probably not add up to your Credit Required. Students will get credit above what is required in the Eligibility Area requirements such as credit for elective classes. Click on Save.

Sort	Eligibility Area	Subjects	Credit Required	Delete
» Sani-Abe Lincoln High School 2012			26.0000	
« Back to List Copy Requirements »				
1	Language Arts	L9-Language Arts 9 L0-Language Arts 10 L1-Language Arts 11 L2-Language Arts 12	4.0	NEW
2		Edit Subjects		NEW
3		Edit Subjects		NEW
4		Edit Subjects		NEW

After saving you can click on Edit Subjects and the subject code you have chosen will show below the eligibility rule. Below is an example of what your requirements might look like.

Sort	Eligibility Area	Subjects	Credit Required	Delete
» Sani-Abe Lincoln High School 2011			27.0000	
« Back to List Copy Requirements »				
105	Language Arts L9-Language Arts 9, L0-Language Arts 10, L1-Language Arts 11, L2-Language Arts 12	L9-Language Arts 9 L0-Language Arts 10 L1-Language Arts 11 L2-Language Arts 12	4.0000	
110	Foreign Language FL-Foreign Language	L9-Language Arts 9 L0-Language Arts 10 L1-Language Arts 11 L2-Language Arts 12	1.0000	
117	Mathematics M1-Math Lvl 1, M2-Math Lvl 2, M3-Math Lvl 3, M4-Math Lvl 4	L9-Language Arts 9 L0-Language Arts 10 L1-Language Arts 11 L2-Language Arts 12	2.0000	
125	Science CP-Science Physical, CB-Science Biological	L9-Language Arts 9 L0-Language Arts 10 L1-Language Arts 11 L2-Language Arts 12	2.0000	
128	World Geography SR-World Geography	L9-Language Arts 9 L0-Language Arts 10 L1-Language Arts 11 L2-Language Arts 12	0.5000	
129	World Civilizations SW-World Civ	L9-Language Arts 9 L0-Language Arts 10 L1-Language Arts 11 L2-Language Arts 12	0.5000	
130	US History SU-US History	L9-Language Arts 9 L0-Language Arts 10 L1-Language Arts 11 L2-Language Arts 12	1.0000	

132	Civics SC-Civics	L9-Language Arts 9 L0-Language Arts 10 L1-Language Arts 11 L2-Language Arts 12	0.5000	<input type="checkbox"/>
135	Social Studies Total SR-World Geography, SW-World Civ, SU-US History, SG-US Govt & Citizen, SC-Civics, SO-Soc Studies Opt	L9-Language Arts 9 L0-Language Arts 10 L1-Language Arts 11 L2-Language Arts 12	3.0000	<input type="checkbox"/>
137	Health Education HE-Health Education	L9-Language Arts 9 L0-Language Arts 10 L1-Language Arts 11 L2-Language Arts 12	0.5000	<input type="checkbox"/>
139	Participation Skills HP-Particip Skills	L9-Language Arts 9 L0-Language Arts 10 L1-Language Arts 11 L2-Language Arts 12	0.5000	<input type="checkbox"/>
140	Fitness For Life HF-Fitness For Life	L9-Language Arts 9 L0-Language Arts 10 L1-Language Arts 11 L2-Language Arts 12	0.5000	<input type="checkbox"/>
142	Fitness Total HC-Fitness Core, HF-Fitness For Life, HO-Fitness Options	L9-Language Arts 9 L0-Language Arts 10 L1-Language Arts 11 L2-Language Arts 12	1.5000	<input type="checkbox"/>
144	The Arts AR-The Arts	L9-Language Arts 9 L0-Language Arts 10 L1-Language Arts 11 L2-Language Arts 12	1.5000	<input type="checkbox"/>
146	Adult Roles TA-Adult Roles	L9-Language Arts 9 L0-Language Arts 10 L1-Language Arts 11 L2-Language Arts 12	0.5000	<input type="checkbox"/>
147	Financial Literacy TF-Financial Lit	L9-Language Arts 9 L0-Language Arts 10 L1-Language Arts 11 L2-Language Arts 12	0.5000	<input type="checkbox"/>
150	Computer Technology TC-Computer Tech	L9-Language Arts 9 L0-Language Arts 10 L1-Language Arts 11 L2-Language Arts 12	0.5000	<input type="checkbox"/>
151	Career & Technical Education TT-Career & Tech Ed	L9-Language Arts 9 L0-Language Arts 10 L1-Language Arts 11 L2-Language Arts 12	1.0000	<input type="checkbox"/>
Add New Eligibility Rules				
« Reset Save »				

If you need to delete a rule, click on the box in the Delete column by the rule you want to delete and click on Save.

Sort	Eligibility Area	Grades	Credit Required	Delete
»	Sani-Abe Lincoln High School 2011 « Back to List Copy Requirements »	9 - 12	27.0000	<input type="checkbox"/>
105	Language Arts	Edit Subjects	4.0000	<input type="checkbox"/>
110	Foreign Language	Edit Subjects	1.0000	<input checked="" type="checkbox"/>